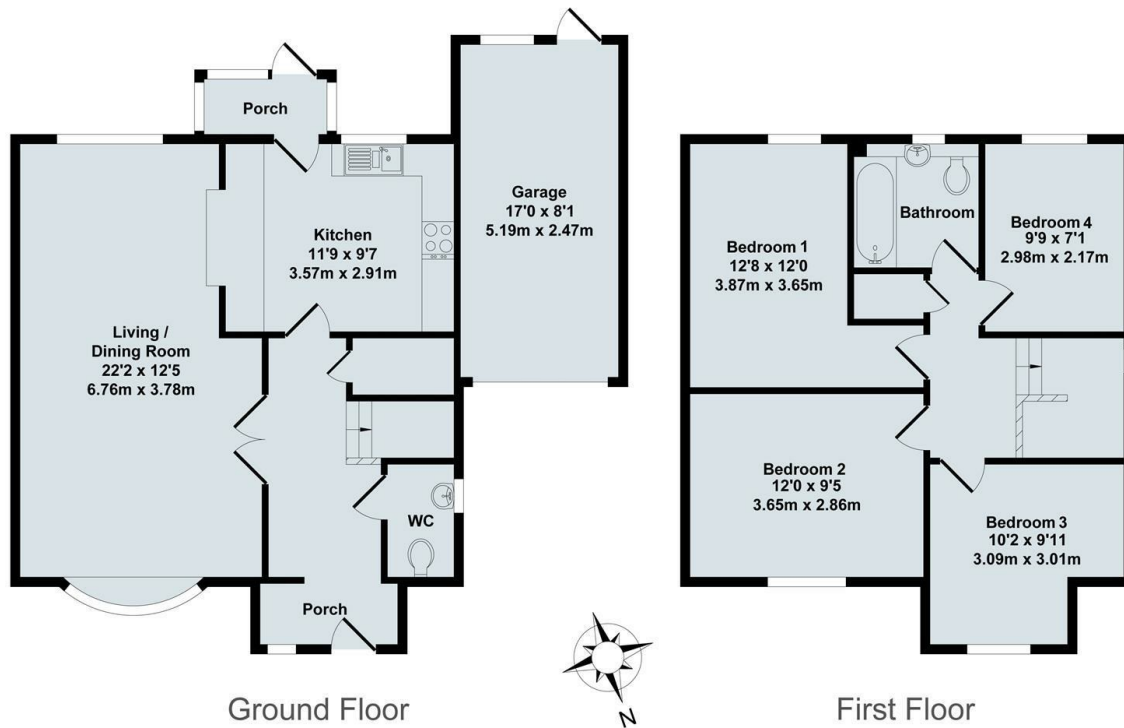




## 25 Burwell Meadow, Witney, OX28 5JG

£1,995 Per Month - 11th July 2026.

- Four bedroom detached house
- Gas CH
- Garage and off street parking
- Mains gas electricity and water
- Unfurnished
- Rear garden
- EPC rating C
- Integrated dishwasher and fridge/freezer
- Cloakroom
- Council Tax Band D



Total Approx. Floor Area 1206 Sq.Ft. (112.0 Sq.M.)  
 All items illustrated on this plan are included in the "Total Approx Floor Area"



### Directions

### Viewings

Viewings by arrangement only. Call 01993 463177 to make an appointment.

### Council Tax Band

D

### EPC Rating:

C

Energy Efficiency Rating		Current	Potential
<i>Very energy efficient - lower running costs</i>			
(92 plus)	A		
(81-91)	B		85
(69-80)	C	69	
(55-68)	D		
(39-54)	E		
(21-38)	F		
(1-20)	G		
<i>Not energy efficient - higher running costs</i>			
<b>England &amp; Wales</b>		EU Directive 2002/91/EC	